

Canon

imageRUNNER
ADVANCE

4251 / 4245 / 4235 / 4225

**Office
Solutions**

multifunction printer

compact design

black-and-white copy/print

color scan



Simply advanced.

4251 / 4245
4235 / 4225

Designed for

**Busy workgroups that demand
outstanding versatility in a
compact space**

Standard Features

Copy/Print/Send/Store

Black-and-White Copy/Print

Color Scan and Send

Print up to 51 ppm (Letter)

Up to 1200 x 1200 dpi

Up to 11" x 17"

4,980-sheet maximum capacity

Scan up to 51 ipm

Flexible in-line finishing options

Scan directly to Microsoft® PowerPoint®
and Searchable PDF formats

Hard Disk Drive Lock and Erase, IPsec



Simply advanced.

The imageRUNNER ADVANCE 4200 Series will propel your business to new levels of performance. A beautifully compact communications hub, it seamlessly integrates business processes and streamlines tasks to achieve impressive efficiency. From every point of view, these models are simply advanced.



People-Centric

An exceptionally intuitive, simple-to-use interface puts access to all functions right at your fingertips, whether at the device or at your desktop.



Mobile

Even on the go, you're in control. Print from a laptop, tablet, or smartphone to an imageRUNNER ADVANCE system.



Security

Multilayered solutions help safeguard confidential information and support security compliance.



Cloud-Enabled

A touch of a button on the user interface lets you access, scan to, or print directly from certain cloud applications.



Collaborative

Work better together! Your teams will have the ability to access and leverage the capabilities of other connected imageRUNNER ADVANCE devices on your network.



Connected

Advanced technology and expansive enterprise applications work seamlessly with your device to deliver exceptional results.



People-centric. Business-focused.

The imageRUNNER ADVANCE 4200 Series redefines productivity. Users accomplish tasks quickly and effectively. Applications are easily customized to enhance workflow. And flexible finishing options promise cost-effective, professional-quality documents.

A smart, intuitive interface

The imageRUNNER ADVANCE 4200 Series empowers users. With an impressive range of customizable, simple-to-use, streamlined features, these models help everyone work smarter and faster. A large, 8.4", full-color, high-resolution TFT screen lets users easily view all information.



Two menus

Press the Main Menu key for instant access to business-ready functions. Use the Quick Menu to power productivity by combining and accessing routine tasks at the touch of a button.



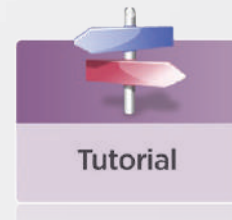
Customizable

Organize the on-screen buttons to fit the way you work by determining their number, size, and layout. Even display your own logo or special graphic as a screen background.



Web-ready

The optional Web browser lets you go online directly from the device control panel. Just enter a URL to browse pages. Easily output online PDFs.



Tutorial

Handy tutorials

Quickly access simple, step-by-step instructions right on the user interface.



Easy Toner Access



One-button Paper Access



USB Keyboard



Inner Finisher with Hole-Punching

Designed for ease

Even with its compact size, the imageRUNNER ADVANCE 4200 Series is big on ease of use, including quick-to-replace toner bottles, paper drawers that spring open at the touch of a button, and an optional USB keyboard.

Designed to fit

The imageRUNNER ADVANCE 4200 Series gives you professional-quality output—all within a space-saving footprint. Smartly designed, the models offer an optional internal finisher—and even hole-punching capabilities—while maintaining a compact design.



Engineered for adaptability

These intelligent systems will help you achieve your goals today and in the future. With the ability to smoothly integrate hardware and software solutions, the imageRUNNER ADVANCE 4200 Series lets you personalize applications to meet your organization's changing needs. And it's highly flexible, so you can easily add to, or update, your system with the quick deployment of settings and applications across your enterprise.



Walk-up convenience

Easily scan to, or print from, a USB thumb drive. Browse folders and rename files. Even expand connectivity options to include memory media, such as an SD card or CompactFlash card.



A consistent experience

No matter which imageRUNNER ADVANCE device you use, you'll enjoy a consistent, simple-to-use experience. All models in the Series use the same interface and print driver.



Seamless connections. Next-generation efficiency.

Imaging and enterprise applications seamlessly integrate. Cloud printing and mobility solutions offer the freedom to work anywhere. Complicated tasks are streamlined and simplified. The imageRUNNER ADVANCE 4200 Series—a truly advanced way to work.



On the go

In an increasingly mobile world, people need the ability to work remotely while maintaining their productivity. Now Canon delivers advanced solutions that keep work flowing effortlessly from wherever you are.



Mobile Devices

Print and scan from your laptop, tablet, and smartphone.* Just log-in at an imageRUNNER ADVANCE device to retrieve your job.



Cloud Portal

Gain quick access to cloud-based applications right from your Canon imageRUNNER ADVANCE device. Simply log in to access or send documents directly from the cloud.



Advanced Anywhere Print

Print to a connected imageRUNNER ADVANCE system. Then conveniently and securely log in at any supported device on the network to view and retrieve your print job with this serverless solution.

*Check for supported devices.

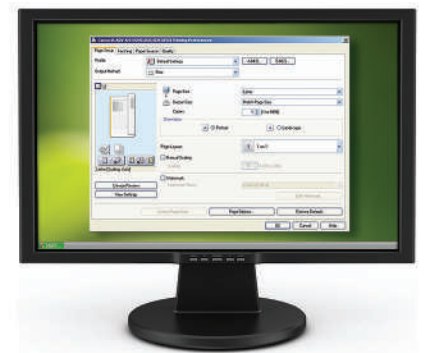
Extensive Print Solutions

Print Options

Canon's proprietary UFR II print technology is standard with these models. Options including Adobe® PostScript® 3™ and PCL 5e/6 are also supported.

Control

Canon's Driver Configuration Tool allows you to set specific defaults and custom profiles. You can also control costs with features such as default duplex printing as well as enhance security by forcing secure print.



Easy collaboration



Scan and store documents

Designed to streamline workflow, these models let you readily save, store, and access scanned documents from multiple locations. Store them in built-in spaces, such as Mail Box and Advanced Box, or external spaces, such as memory media or another networked location.



Distribute documents

Distribute scanned documents to multiple destinations, such as e-mail and fax addresses and network folders, all in a single step. Now you can scan and convert both black-and-white and color documents directly into Microsoft® PowerPoint® or a Searchable PDF format. Universal Send supports an expanded range of file formats, including High-Compression PDF/XPS and Encrypted PDF.



Fax documents

These models support up to four fax lines, work with your VoIP network, and have the ability to share the fax function of another networked imageRUNNER ADVANCE model. The Job Forwarding feature automatically routes incoming faxes to other systems, users, or destinations.

Right from your PC

Enjoy even greater control and convenience right from your PC. Use the imageRUNNER ADVANCE Quick Printing Tool to print, fax, preview, and convert files to PDFs, as well as monitor the status of your system—all without even opening an application. The imageRUNNER ADVANCE Desktop solution lets you manage and prepare documents, combine multiple formats, preview files, and select the finishing functions.



Real managed document services

MDS (Managed Document Services)—expert, ongoing optimization of your total document environment—can boost productivity and help deliver big savings. These models are designed from the start to tap into powerful MDS tools and services that track usage, improve printing behavior, identify excessive printing, efficiently manage information and processes, and more. Canon's software solutions and professional services leverage MDS to take your business to the next level.

Streamline your workflow

Canon's middleware technology links enterprise applications, such as Oracle® and SAP®, with Customer Relationship Management systems such as Salesforce.com®. The streamlined workflow automates complex business processes and offers easy access to information, saving both time and money.





Robust security. Centralized management.

In today's networked world, you need greater control over your resources and data. The imageRUNNER ADVANCE 4200 Series delivers just that with the ability to configure a system, help safeguard information, and track resources, all right at your fingertips.



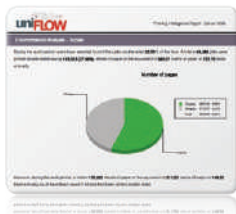
Powerful command

Canon's device management tools keep you in charge at every step, right from your desktop or through the cloud. Easily install and replace devices, migrate settings and data to new ones, and distribute applications and settings across your network. Monitor a single device with the Remote User Interface or an entire fleet with the imageWARE Enterprise Console. You can even receive alerts when supplies or service are needed.



Safeguard data

From installation to retirement, this Series offers multilayered solutions to help safeguard information and support security compliance. HDD Erase, a standard feature, removes latent images after each task to help safeguard your information during use and at end of life. A security chip with tamper-resistant hardware helps protect passwords and encryption keys. IPsec provides security for data as it traverses the network.



Maximize resources

These systems offer advanced tools to help you track, manage, and influence user behavior. Solutions such as uniFLOW analyze output, encourage double-sided printing, and allocate costs by department, project, or client. You can also route jobs to the most cost-effective device.



Secure authentication

With the need to keep data secure, Universal Login Manager and AA-Print provide a serverless environment where users can print from anywhere within the network to any supported device via log-in authentication. This helps prevent printed documents from being left unattended.

Security Features

Document Security

- Document Scan Lock and Tracking
- Adobe LiveCycle® Rights Management ES2.5 Integration
- Encrypted Secured Print
- Watermark/Secure Watermark
- Copy Set Numbering
- Encrypted PDF
- Digital Signature PDF
- Fax Forwarding
- Fax Destination Confirmation

Mail Server Security

- POP Authentication before SMTP
- SMTP Authentication

Network Security

- IP/MAC Address Filtering
 - Port Filtering
- SSL Encryption
- Network Application On/Off
- USB Port On/Off
- Destination Restriction
- IPsec
- IEEE 802.1X (Wire/Wireless)

Device Security

- IEEE 2600.1 Certification*

Data Security

- HDD Lock
- Trusted Platform Module
- HDD Data Erase and Initialize
- HDD Data Erase Scheduler
- HDD Encryption
- Advanced Box Security
- Mail Box Password Protection
- Job Log Conceal
- Removable Hard Disk Drive

Logging/Auditing Security

- imageWARE Secure Audit Manager Express

Authentication

- Department ID/Control Card Systems
- Device Level Log-in (SSO-H)
- Access Management System (AMS)
- Function Level Log-in via AMS
- Authorized Send
- Common Access Card (AA-CAC)
- Universal Login Manager

Note: Some features may be optional.



Professional quality. Outstanding reliability.

Give your business a real competitive edge with the imageRUNNER ADVANCE 4200 Series. True multitasking power keeps work moving. Custom workflow solutions streamline processes. And professional-quality documents are reliably produced.

Powerful operation

Keep work moving at the speed your business demands. These models have two dedicated processors that work together to accomplish multiple tasks simultaneously. Quick Startup mode minimizes warm-up time, so devices start up promptly.

Lots of uptime

With the imageRUNNER ADVANCE 4200 Series models, you'll enjoy ongoing productivity. Status notifications keep you ahead of the game, and toner and paper can be replaced on the fly. If the correct paper size or stock for a job is unavailable, the system can begin the next job, without delay, to help maximize uptime. If a misfeed occurs while you're scanning, work keeps moving forward without needing to restart from the misfeed location. And easy access to the latest technology and upgrades keeps these models operating at peak performance.



Targeted, integrated solutions

With productivity paramount, the imageRUNNER ADVANCE 4200 Series offers the ability to personalize the way your company gathers, organizes, and disseminates information. Canon's innovative MEAP® platform lets you develop custom solutions to meet specific workflow needs. And new levels of connector and link support enhance communication with existing systems as well as those you may acquire in the future.

Standout results

Make a great impression with professional-quality reports, manuals, newsletters, and contracts. The imageRUNNER ADVANCE 4200 Series gives you the ability to generate high-quality documents in-house. Produce crisp black-and-white images and finish documents easily, all while enjoying outstanding convenience and impressive cost savings.



Strong commitment. Eco-conscious solutions.

The imageRUNNER ADVANCE 4200 Series incorporates innovative, eco-conscious features that keep your business operating efficiently while helping to reduce your environmental footprint.



A responsible way to work

Canon knows that the world and the workplace need a greener workflow, and the imageRUNNER ADVANCE 4200 Series, rated EPEAT® Silver, delivers just that. Now you can seamlessly share and distribute digital documents as well as preview files to make changes prior to printing, all of which help to reduce the use of paper and toner. Print drivers are defaulted to duplex documents to encourage two-sided printing and reduce waste. And with Secure Print, documents are sent to a device but not printed until a password is entered, further contributing to paper waste reduction.



Eco-conscious design

Canon is making a difference through creative, ecological thinking. These imageRUNNER ADVANCE models employ certain components that are made with recycled plastic from retired products. And, Canon's innovative green technologies also include bio-based plastic, a plant-derived compound that replaces certain petroleum-based plastic parts.

A clear strategy

Greater energy efficiency

From the inside out, the imageRUNNER ADVANCE 4200 Series is designed for high-energy efficiency and stellar performance. The combination of Canon's fusing technologies and toner helps lower overall energy consumption by minimizing power requirements and reducing energy use during warm-up and standby modes. With advanced technologies present in each model, the Series also meets ENERGY STAR® standards.



Minimize environmental impact

All suppliers are required to meet Canon's stringent Green Procurement policy and environmental terms. This helps the company exceed the toughest global standards set by the EU RoHS Directive, which restricts the use of certain hazardous substances.



Reduction of CO₂ emissions

Through its Life Cycle Assessment System, Canon has lowered CO₂ emissions by focusing on each stage of the product life cycle, including manufacturing, energy use, and logistics. These products are designed to be the smallest and lightest in their class, with less packaging to help make transportation more efficient.



Designed for outstanding versatility

Finishing Options

A Booklet Finisher-G1

- 2-tray, 3,000-sheet capacity
- Corner and double stapling, up to 50 sheets
- Booklet-making, up to 16 sheets



Staple Finisher-G1

- 2-tray, 3,000-sheet capacity
- Corner and double stapling up to 50 sheets

B External 2/3-Hole Puncher-B2*

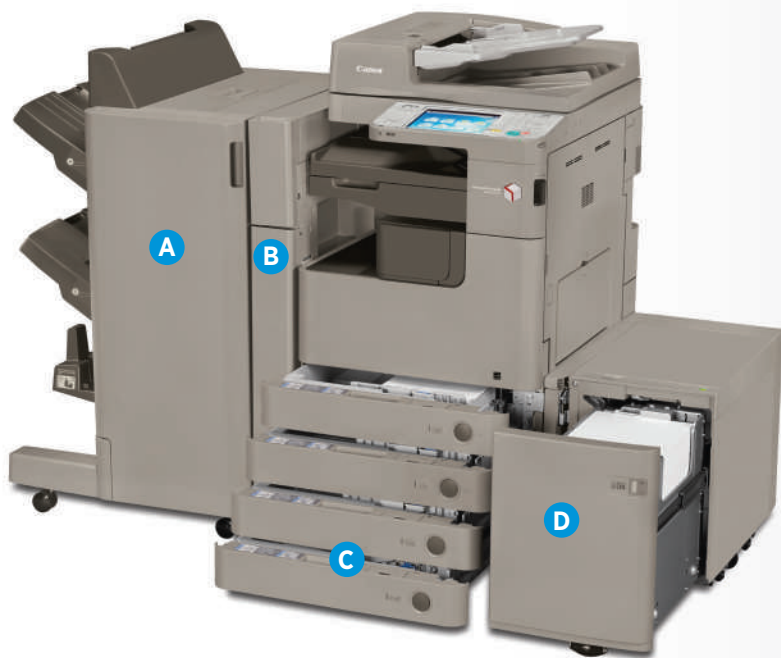
- 2- and 3-hole punching

Inner Finisher-D1 with 2/3-Hole Puncher-A1 and Optional Inner Finisher Additional Tray-A1

- 600-sheet capacity**
- 2- and 3-hole punching
- Corner and double stapling, up to 50 sheets

Other Finishing Options:

Inner 2-way Tray-H1



Paper Feeding Options

C Cassette Feeding Unit-AF1

- 550-sheet x 2-cassette capacity
- 16 lb. Bond to 34 lb. Cover
- Supports up to 11" x 17"

D Paper Deck Unit-B2

- 2,700-sheet capacity
- 16 lb. Bond to 34 lb. Bond
- Supports letter-sized paper



Envelope Feeder Attachment-D1

- 50-sheet capacity
- Supports COM10 No.10, Monarch, DL, ISO-B5

Printer Options***

PCL Printer Kit-AY1

PS Printer Kit-AY1

Direct Print Kit (for PDF/XPS)-H1

Security Options

Universal Send Security Feature Set-D1

Universal Send Digital User Signature Kit-C1

Encrypted Secure Print-D1

Removable HDD Kit-AJ1

Secure Watermark-B1

Document Scan Lock Kit-B1

HDD Data Encryption and Mirroring Kit-C4

HDD Data Erase Scheduler

iR-ADV Security Kit-K1 for IEEE 2600.1 Common Criteria Certification†

Accessibility Options

Remote Operators' Software Kit-B1



Voice Operation Kit-C2

Voice Guidance Kit-F2

Braille Label Kit-F1

ADF Access Handle-A1

* Requires Staple Finisher-G1 or Booklet Finisher-G1.

** 1000-sheet capacity when Inner Finisher Additional Tray-A1 is not attached.

*** UFR II standard.

† Not available at time of launch.

Note: For additional options and specifications, please refer to the back page.

Main Unit

Operation Panel: 8.4" SVGA Full-Color TFT Screen

Memory

Standard: 1.25GB RAM
Maximum: 1.75GB RAM

Hard Disk Drive

Standard: 160GB
Maximum: 1TB

Network Interface Connection

Standard: 10/100/1000Base-TX
Optional: Wireless LAN

Other Interface

Standard: USB 2.0 (Host) x2, USB 2.0 (Device)
Optional: Device Port [USB 2.0 (Host) x 2], Copy Control Interface

Copy/Print Speed (Letter)

4251: Up to 51 ppm
4245: Up to 45 ppm
4235: Up to 35 ppm
4225: Up to 25 ppm

First-Copy-Out Time (Letter)

4251: 3.7 Seconds
4245/4235: 3.8 Seconds
4225: 5.2 Seconds

Paper Sources (20 lb. Bond)

Standard: Dual 550-sheet Paper Cassettes, 80-sheet Stack Bypass
Maximum: 4,980 Sheets

Output Paper Capacity (20 lb. Bond)

Standard: 250 Sheets (Inner Tray)
Maximum: 3,100 Sheets (w/Staple Finisher or Booklet Finisher)

Output Paper Sizes

Cassette 1: Legal, Letter, Letter-R, Statement-R, Executive, Custom Size (5-1/2" x 7-1/8" to 11-3/4" x 15-3/8")
Cassettes 2/3/4: 11" x 17", Legal, Letter, Letter-R, Statement-R, Executive, Custom Size (5-1/2" x 7-1/8" to 11-3/4" x 17")
Bypass: 11" x 17", Legal, Letter, Letter-R, Statement-R, Executive, Custom Size (3-7/8" x 5-7/8" to 11-3/4" x 17")

Acceptable Paper Weights

Cassettes: 16 lb. Bond to 34 lb. Bond (60 to 128g/m²)
Bypass: 14 lb. Bond to 80 lb. Index (52 to 220g/m²)

Warm-up Time

From Power On: 30 Seconds
From Sleep Mode: 10 Seconds
Quick Startup Mode: 7 Seconds[†]

Power Requirements/Plug

120V AC, 60Hz (10.4A/NEMA 5-15P)

Dimensions (H x W x D)

4251/4245: 35-1/2" x 22-1/4" x 27-7/8" (909mm x 565mm x 708mm)*
4235/4225: 30-3/8" x 22-1/4" x 27-5/8" (771mm x 565mm x 700mm)

Installation Space (W x D)

(when the Multi-Purpose Tray is extended)
4251/4245: 34-1/2" x 27-7/8" (876mm x 708mm)*
4235/4225: 34-1/2" x 27-5/8" (876mm x 700mm)

Weight (Includes consumables)

4251/4245: Approx. 172 lb. (77.9kg)*
4235/4225: Approx. 154 lb. (70kg)

Toner (Estimated Yield @ 6% Coverage)

4251/4245: 34,200 Images
4235/4225: 30,200 Images

Document Feeder

Scan Method

Duplexing Automatic Document Feeder
(Standard on 4251/4245; Optional on 4235/4225)

Acceptable Originals

Paper Size: 11" x 17", Legal, Letter, Letter-R, Statement

Scan Speed (BW/Color; Letter)

Simplex: 51/51 ipm (300 dpi)
51/30 ipm (600 dpi)**

Paper Capacity (20 lb. Bond)

100 Sheets

Print Specifications

Engine Resolution: 1200 x 1200 dpi

PDL Support

Standard: UFR II
Optional: PCL 5e/6, PCL 6, Adobe PS 3

Print Driver Supported OS

UFR II, PCL 5e/6, Adobe PS 3:
Windows® (XP/Windows Vista®/7/8), Windows Server (2003/2008/2008 R2/SBS 2011/2012), Windows Terminal Servers, Microsoft® Clustering Server, Citrix, Macintosh® (OS X 10.5.8 or later, UFR II and PS 3 only), VMware, SAP (PS and PCL Only)

Direct Print Support

Standard: TIFF, JPEG
Optional: PDF, EPS,*** XPS[†]

Universal Send Specifications

Sending Method

E-Mail, I-Fax, File Server (FTP, SMB, WebDAV), Mail Box, Super G3 Fax (Optional), IP Fax (VoIP) (Optional)

Communication Protocol

File: FTP (TCP/IP), SMB (TCP/IP), WebDAV
E-mail/I-Fax: SMTP, POP3, I-FAX (Simple, Full)

File Format

Standard: TIFF, JPEG, PDF, PDF/XPS (Compact), PDF (Apply Policy), PDF (Optimize for Web), PDF/A-lb, XPS, PDF/XPS (OCR), OOXML (.pptx)
Optional: PDF (Trace & Smooth), PDF (Encrypted), PDF/XPS (Digital Signature)

Fax Specifications

Maximum Number of Connection Lines: 4

Modem Speed

Super G3: 33.6 Kbps
G3: 14.4 Kbps

Compression Method: MH, MR, MMR, JBIG

Sending/Recording Size: Statement to 11" x 17"

Store Specifications

Mail Box (Number supported)

100 User Inboxes, 1 Memory RX Inbox, 50 Confidential Fax Inboxes

Advanced Box

Available: Approx. 15GB (Standard HDD)
Disk Space: Approx. 629GB (1TB HDD)

Communication

Protocol: SMB or WebDAV

Supported

Client PC: Windows® (Windows 2000/XP/Windows Vista®/7)

Memory Media

Standard: USB Memory
Optional: SD, SDHC, CompactFlash®, Memory Stick, Microdrive

Security Specifications

Standard

Department ID Management, Single Sign On-H, Access Management System (Device and Function Level Log-in), Secured Print, Trusted Platform Module, User Access Control of Advanced Box, Mail Box Password Protection, IPV6, Restricting Features (Restricting the Send Function, Restricting New Addresses on Address Book), SSL Encrypted Communication, SNMPv1/v3, MAC/IP Address Port Filtering, SMTP Authentication, POP Authentication before SMTP, HDD Initialize (up to 9x), HDD Erase (Up to 3x), HDD Lock, IPsec, Adobe LiveCycle® Rights Management ES2.5 Integration

[†] If "Quick Startup Settings for Main Power" is set to ON, it takes seven seconds until the key operation on the touch-panel display is available after turning on the main power, and 10 seconds until the start button function is available.

* Includes DADF.

** Standard color scan support is for 100 dpi and 300 dpi. Up to 600-dpi scanning requires Additional Memory Type A (512MB).

*** EPS can be printed directly only from the Remote User Interface.

[†] XPS cannot be printed directly from the Web Access Software.

NOTE: Some accessories require additional equipment or may be prerequisites for other options. Some accessories cannot be installed simultaneously. Check with your Canon Authorized Dealer for details.

As an ENERGY STAR® Partner, Canon U.S.A., Inc. has qualified these models as meeting the ENERGY STAR energy efficiency criteria through an EPA recognized certification body. ENERGY STAR and the ENERGY STAR mark are registered U.S. marks. CANON, IMAGERUNNER, MEAP, and the GENUINE logo are registered trademarks of Canon Inc. in the United States and may also be registered trademarks or trademarks in other countries. IMAGWARE is a registered trademark of Canon U.S.A., Inc. in the United States and is a trademark of Canon Inc. in certain other countries. All other referenced product names and marks are trademarks of their respective owners and hereby acknowledged. Specifications and availability subject to change without notice. Products are not manufactured for outdoor use; depiction of such is for artistic purposes only. Products shown with optional accessories. All printer output images are simulated. Canon U.S.A. does not provide legal counsel or regulatory compliance consultancy, including without limitations, Sarbanes Oxley, HIPAA, GLBA, Check 21 or the USA Patriot Act. Each customer must have its own qualified counsel determine the advisability of a particular solution as it relates to regulatory and statutory compliance.

©2013 Canon U.S.A., Inc. All rights reserved.

0179W984
0913-4200SRS-50M-DMC

1-800-OK-CANON
www.usa.canon.com

Canon U.S.A., Inc.
One Canon Park
Melville, NY 11747

